

# POWER SPLITTERS

K241, V241 Series, DC to 65 GHz



K241C



V241C

These microwave power splitters are symmetrical, two-resistor designs that can be used in applications where signals from DC to 65 GHz must be accurately divided for ratio measurements. They provide excellent flatness and effective output SWR. K Connectors® are compatible with 3.5 mm and SMA; V Connectors® are compatible with 2.4 mm.

## Features

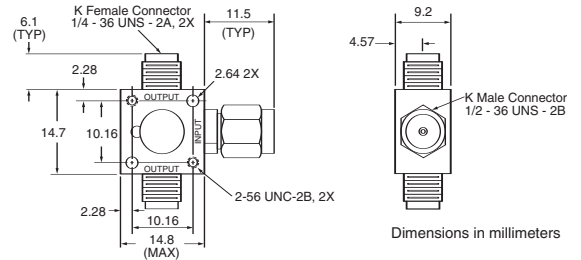
- DC to 65 GHz frequency range
- K Connector® compatibility with SMA/3.5 mm
- V Connector® compatibility with 2.4 mm
- Excellent flatness and effective output SWR

## Specifications

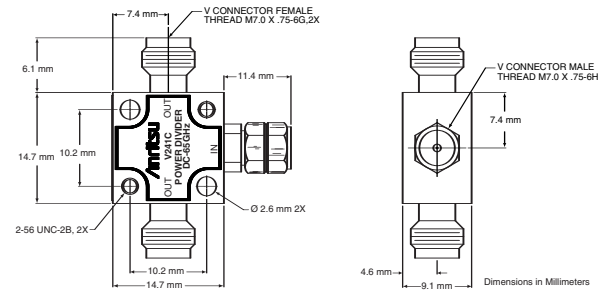
Model	Frequency range (GHz)	Impedance (Ω)	Connectors	
			Input	Output
K241B	DC to 26.5	50	K(m)	K(f)
K241C	DC to 40	50	K(m)	K(f)
V241C	DC to 65	50	V(m)	V(f)

Model	Frequency range (GHz)	Flatness (dB)	Input SWR	Effective output SWR	Insertion loss (dB)
K241B	DC to 26.5	2.0	1.45	1.45	7.5
K241C	DC to 26.5	2.0	1.45	1.45	7.5
	26.5 to 40	2.0	1.93	1.70	8.5
V241C	DC to 18	2.0	2.11	2.00	8.5
	18 to 40	2.0	2.33	2.30	9.5
	40 to 65	2.0	2.62	2.60	10.5

**Maximum Input Power:** 1W  
**Temperature range:** 0°C to +70°C  
**Weight:** 43g



K241B, K241C outline



V241C outline

## Ordering information

Please specify model/order number, name, and quantity when ordering.

Model/Order No.	Name
K241B	Precision Power Splitter, DC to 26.5 GHz
K241C	Precision Power Splitter, DC to 40 GHz
V241C	Precision Power Splitter, DC to 65 GHz